



AMT FÜR BAU UND INFRASTRUKTUR
FÜRSTENTUM LIECHTENSTEIN



Liechtensteiner
Behinderten-Verband

Version:	2.0
Datum:	12.12.2012
Gez.:	R.B.

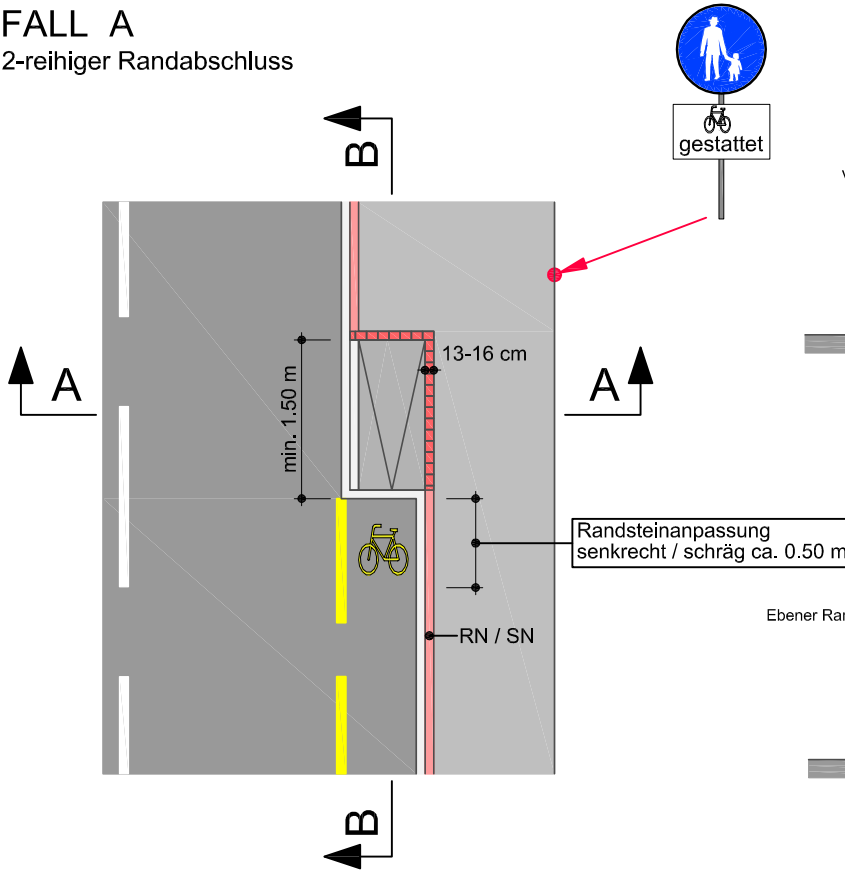
gültig ab: 01. Januar 2013

STANDARDDETAIL 7: Velorampe

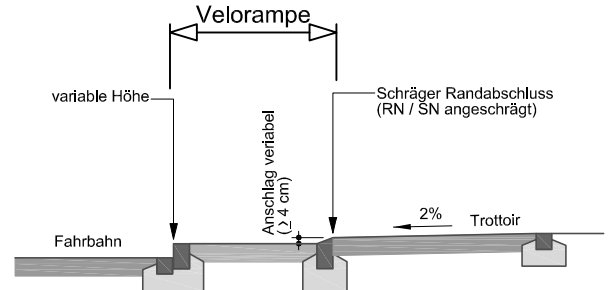
Plan Nr. 07

FALL A

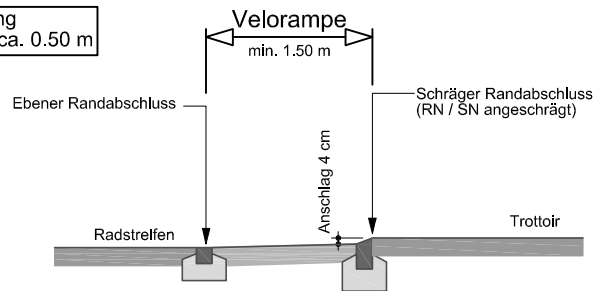
2-reihiger Randabschluss



Schnitt A - A

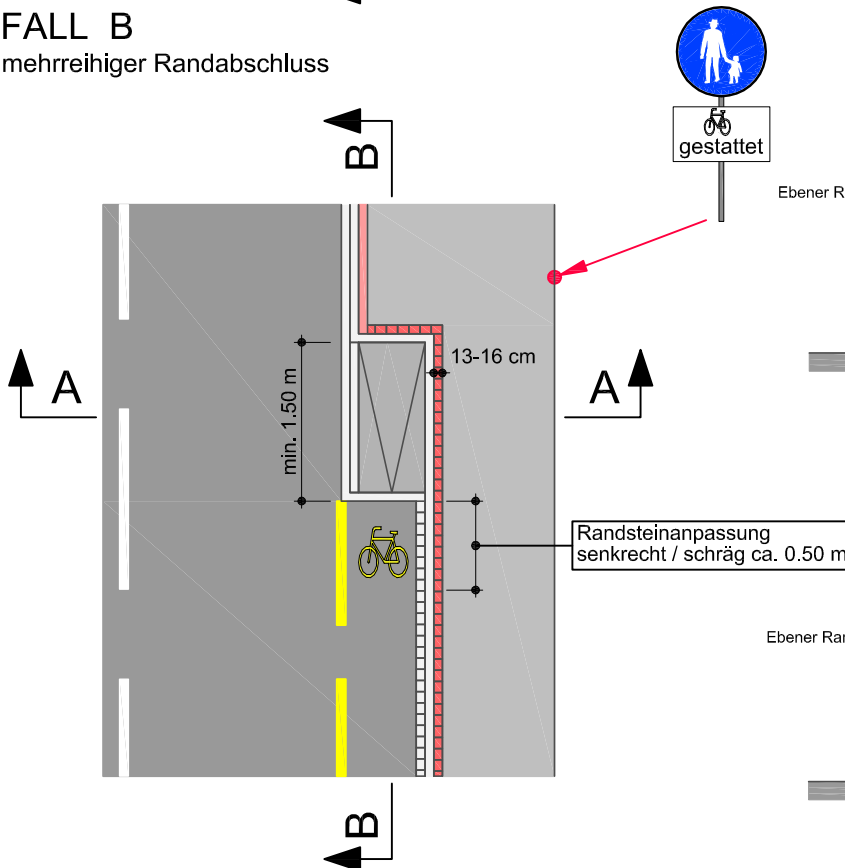


Schnitt B - B

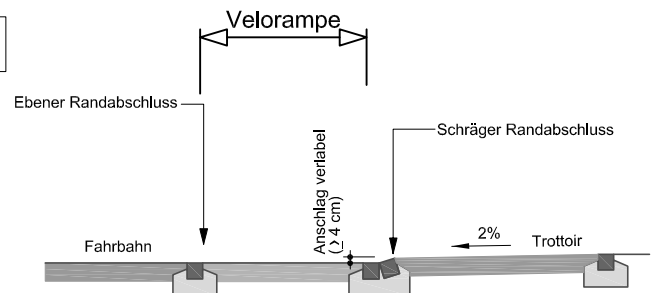


FALL B

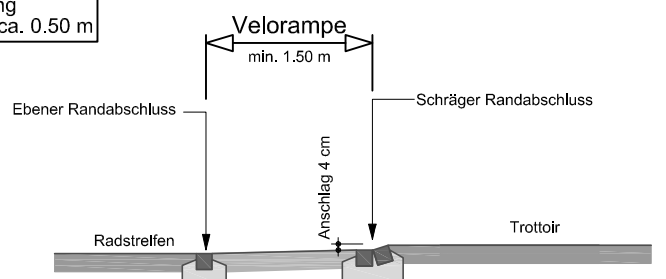
mehreihiger Randabschluss



Schnitt A - A



Schnitt B - B



Symbolerklärung:

- taktile Ertastbarkeit (Blindenstock)
- schräger Randabschluss